

GAS WATER HEATER SCHEDULE

MARK	AREA SERVED	MFR	MODEL	STORAGE CAPACITY IN GALS.	HEAT RECOVERY AT 90°F	GAS INPUT	FLUE SIZE	EQUIPMENT CONNECTION SIZE				REMARKS:
								GAS	CW	HW	RELIEF	
WH-1 THRU WH-4	DOMESTIC WATER	A.O. SMITH	GPDx-50	50	64	65,000	3"ø	1/2"	3/4"	3/4"	3/4"	SEE GAS FLOOR PLAN ON SHEET P-2 FOR ACTUAL GAS DELIVERY PIPE SIZE TO WATER HEATERS

NOTE:
WATER HEATER SHALL BE MODEL BTH-150 AS MANUFACTURED BY A.O. SMITH. WATER HEATER SHALL BE OF THE SEAMLESS GLASS LINED STEEL TANK CONSTRUCTION IN WHICH THE GLASS COATING IS APPLIED TO THE WATER SIDE SURFACES OF THE TANK HAS BEEN ASSEMBLED AND WELDED. THE CONDENSING FLUE COIL SHALL BE COATED ON THE FLUE GAS SIDE WITH A.O. SMITH PROPRIETARY ACID RESISTANT GLASS LINING DESIGNED FOR USE IN CONDENSING HEATERS.

THE HEATER SHALL BE SUITABLE FOR PROPANE GAS.

THE HEATER SHALL BE SUITABLE FOR SEALED COMBUSTION DIRECT VENTING USING A 3" DIAMETER PVS AIR INTAKE PIPE AND 3" DIAMETER PVC EXHAUST PIPE FOR A TOTAL DISTANCE OF 50 EQUIVALENT FEET OF VENT AND 50 EQUIVALENT FEET OF INTAKE. THE HEATER SHALL BE APPROVED FOR 0" CLEARANCE TO COMBUSTIBLES.

THE CONTROL SHALL BE AN INTEGRATED SOLID STATE TEMPERATURE AND IGNITION CONTROL DEVICE WITH INTEGRAL DIAGNOSTICS, LED FAULT DISPLAY CAPABILITY AND A DIGITAL DISPLAY OF TEMPERATURE SETTINGS.

THE TANK SHALL BE FOAM INSULATED AND EQUIPPED WITH A ASME RATED TEMPERATURE PRESSURE RELIEF VALVE. THE WATER HEATER SHALL BE UL LISTED AND EXCEED THE MINIMUM EFFICIENCY REQUIREMENTS OF ASHRAE/IES 90.1b-1992.

THE TANK SHALL BE FOAM INSULATED AND EQUIPPED WITH A ASME RATED TEMPERATURE PRESSURE RELIEF VALVE. THE WATER HEATER SHALL BE UL LISTED AND EXCEED THE MINIMUM EFFICIENCY REQUIREMENTS OF ASHRAE/IES 90.1b-1992.

Contractor must verify all dimensions at project before proceeding with this work. Do not reproduce these drawings and specifications without the expressed written permission from Wilson Madsen. The drawings and specifications are instruments of service and shall remain the property of Wilson Madsen. Whether the project for which they are made is executed or not. These drawings and specifications shall not be used by anyone on any other project, for additions to the project, or for completion of the project by others without the express written permission of Wilson Madsen.

© Copyright Wilson Madsen 2003

ARIZONA FIRST PARTNERS 3 LLC

3

ARIZONA FIRST PARTNERS 3 LLC

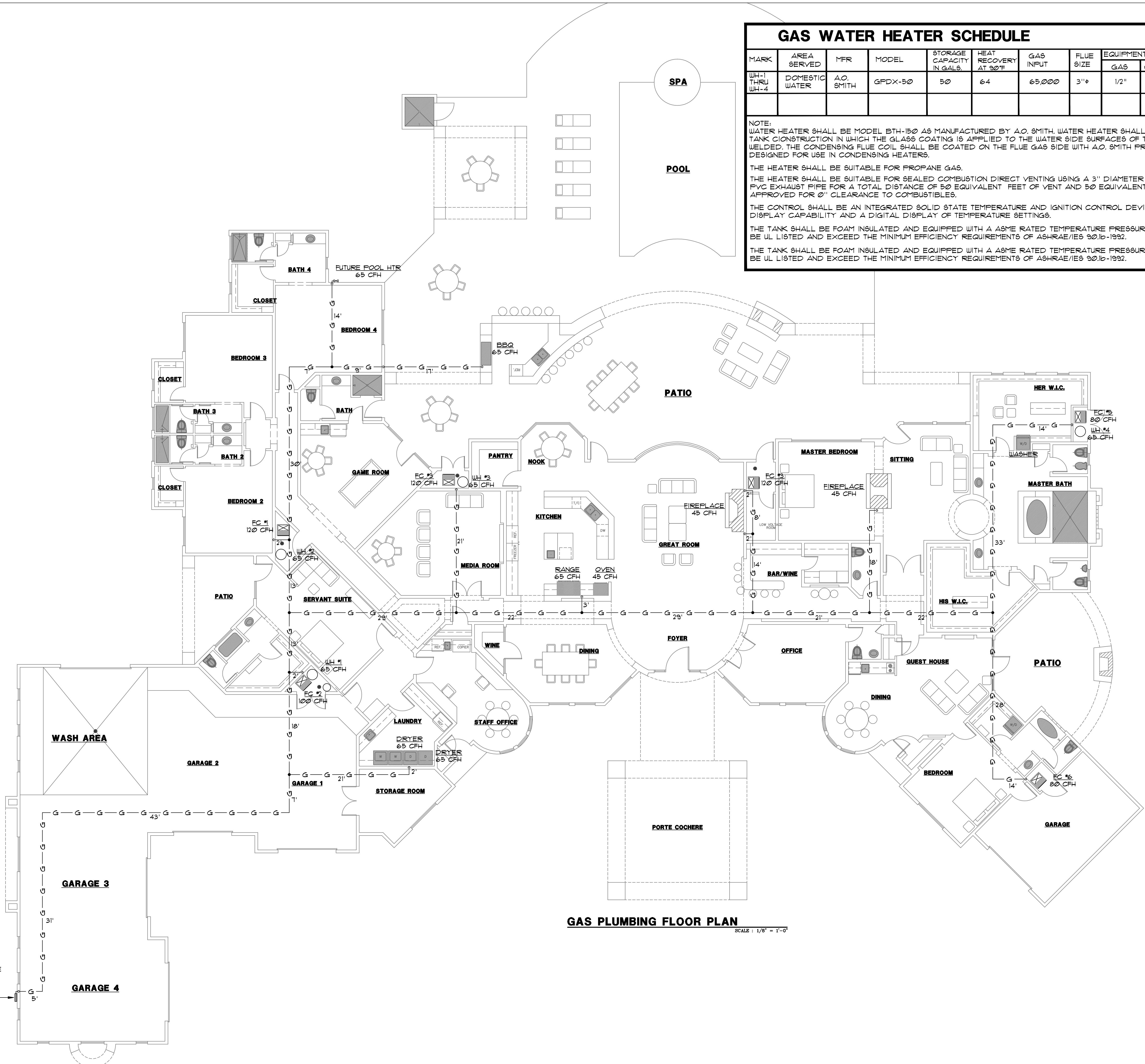
P-3

JOB

DATE

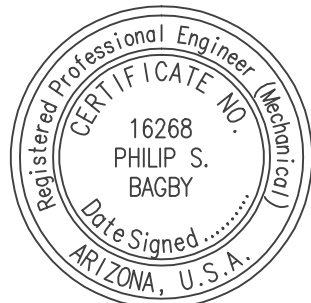
GAS_PLUMBING FLOOR_PLAN

GAS METER- COORDINATE INSTALLATION WITH GAS COMPANY TO PROVIDE 1655 CFH AT 1" W.C. (TDL = 311')



GAS PLUMBING FLOOR PLAN

SCALE : 1/8" = 1'-0"



B.C. Engineering, Inc.
mechanical consulting engineers
3001 W. Indian School Rd., Ste. 24
Phoenix, Arizona 85017
(602) 270-9552 FAX: (602) 270-9107
BCE # 270159