

Contractor must verify all dimensions at project before proceeding with this work. Do not reproduce these drawings and specifications without the expressed written permission from Wilson Mudge, Inc. The drawings and specifications are instruments of service and shall remain the property of Wilson Mudge, Inc. whether the project for which they are made is executed or not. These drawings and specifications shall not be used by anyone on any other project, for additions to this project, or for completion of this project by others except by the expressed written permission of Wilson Mudge, Inc.

© Copyright Wilson Mudge 2003

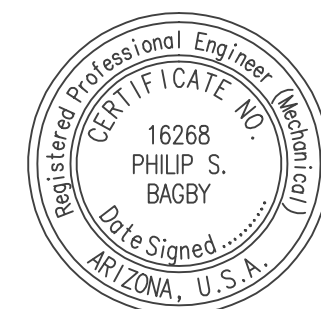
ARIZONA FIRST PARTNERS 3 LLC

M-2

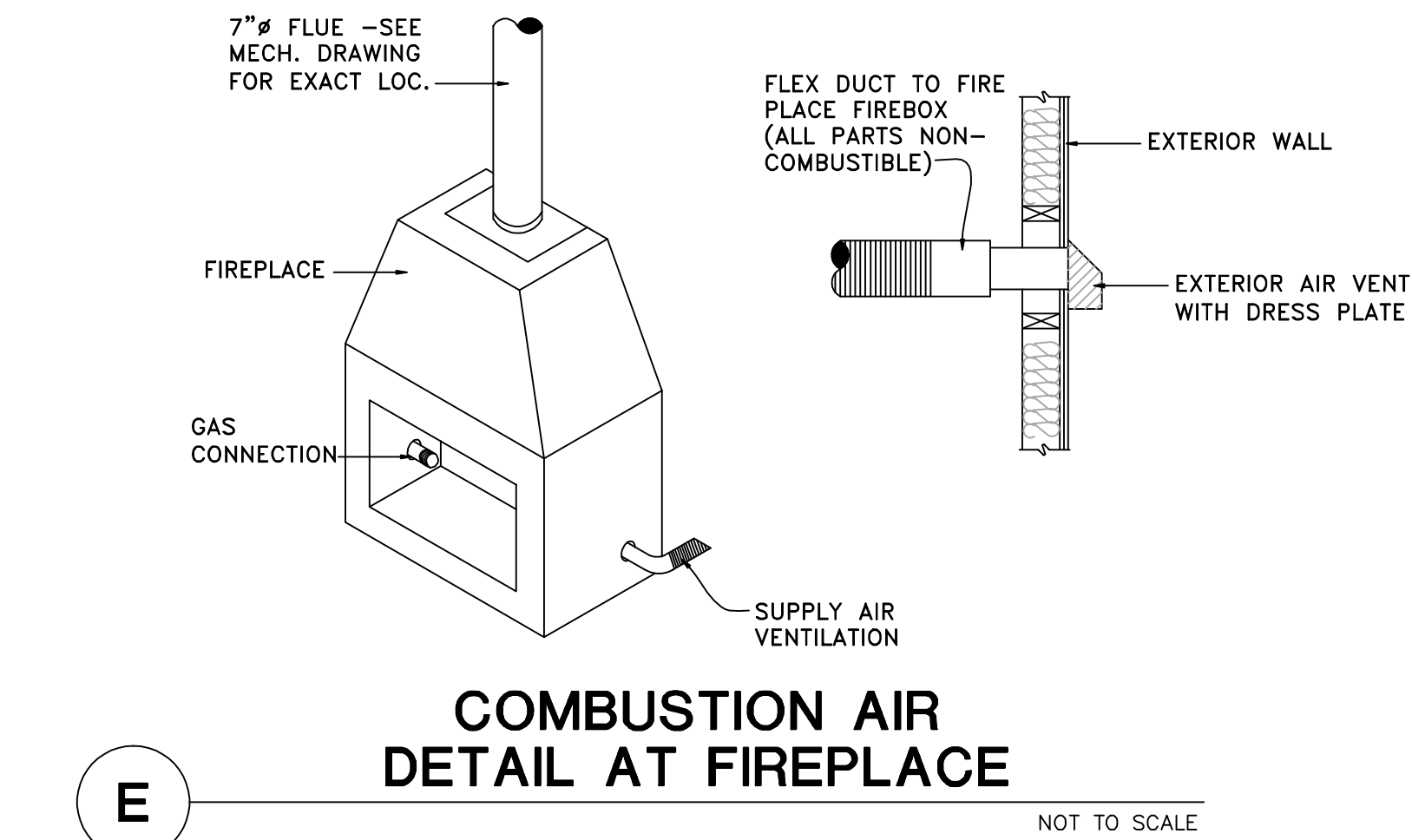
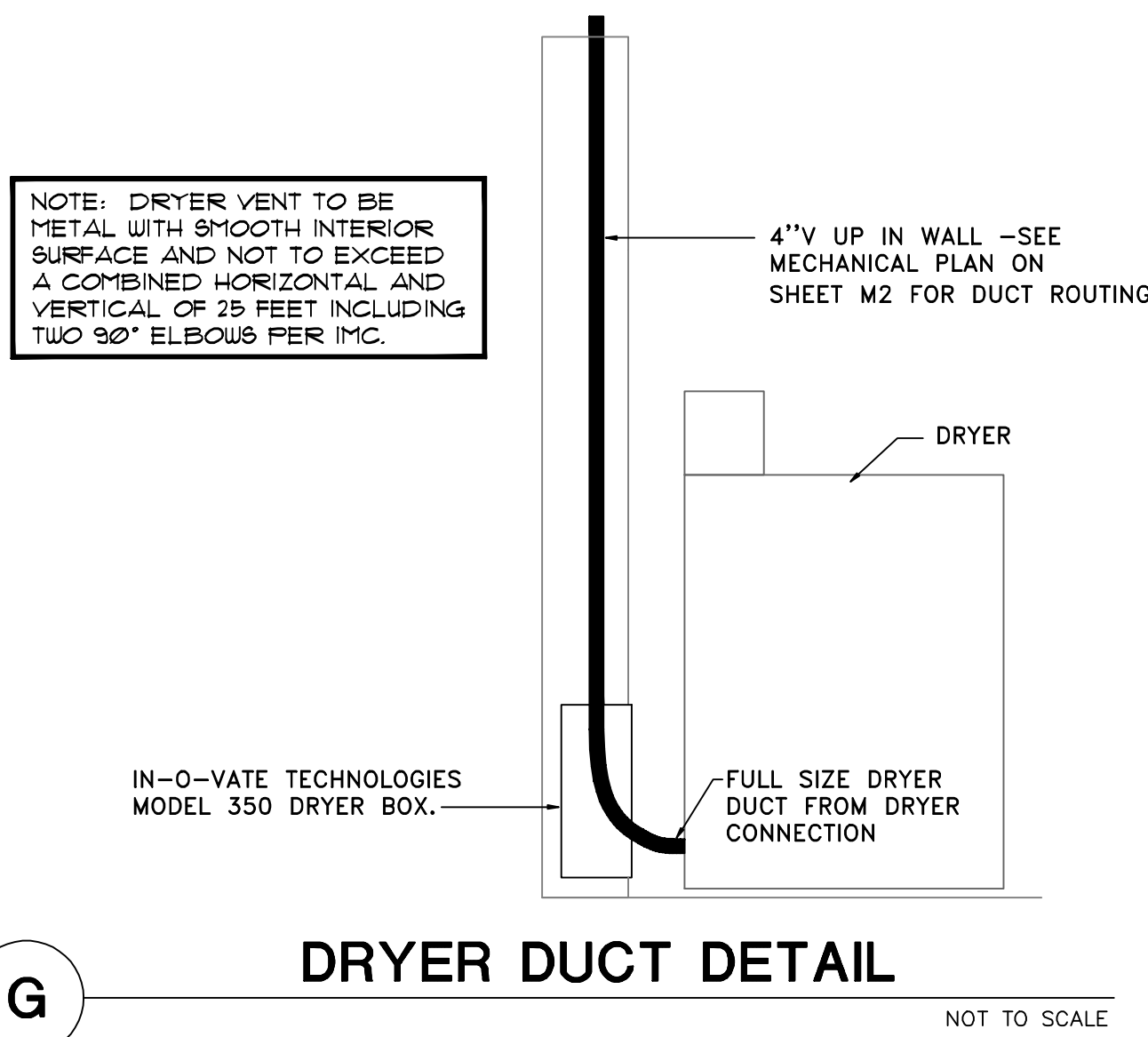
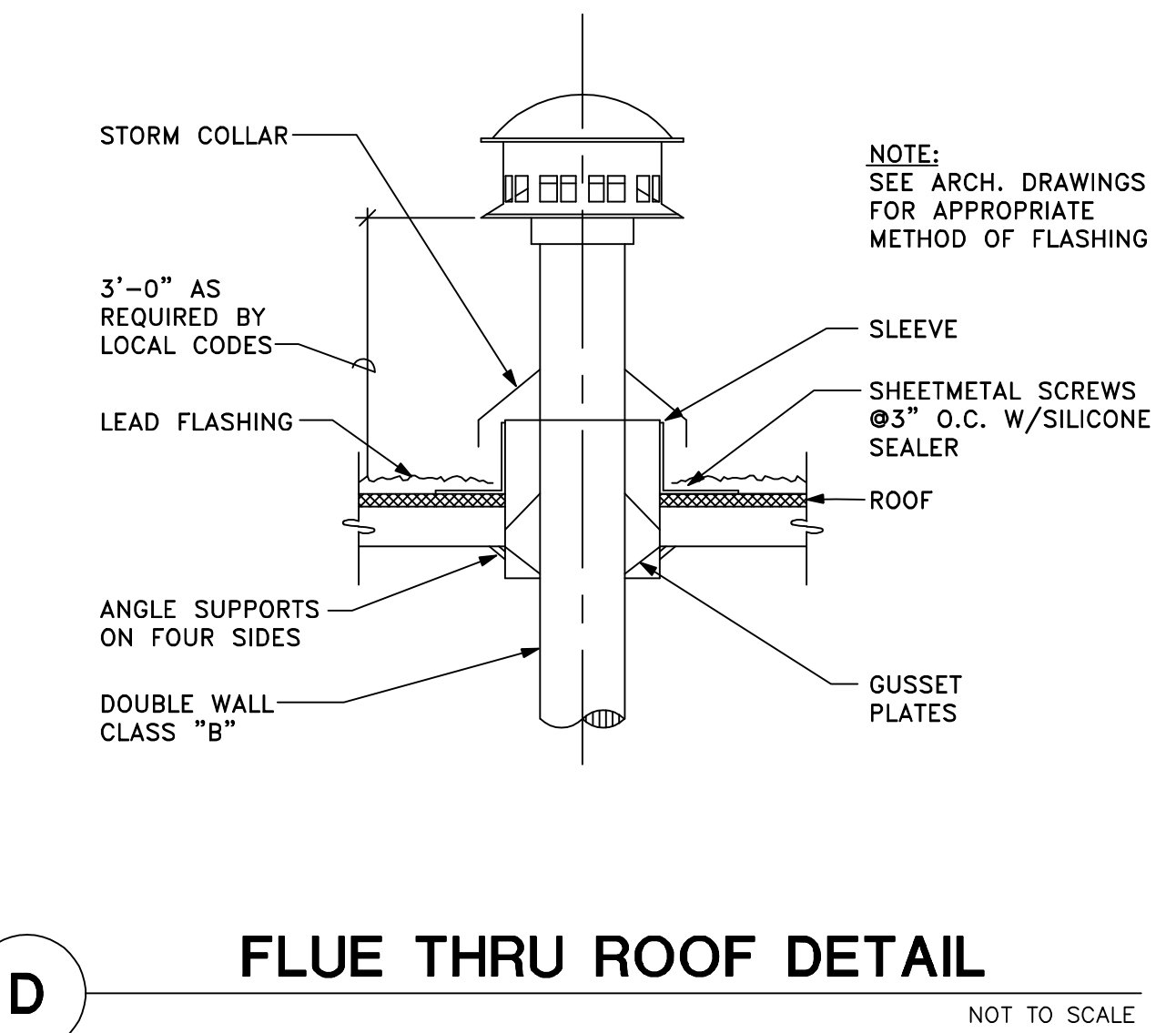
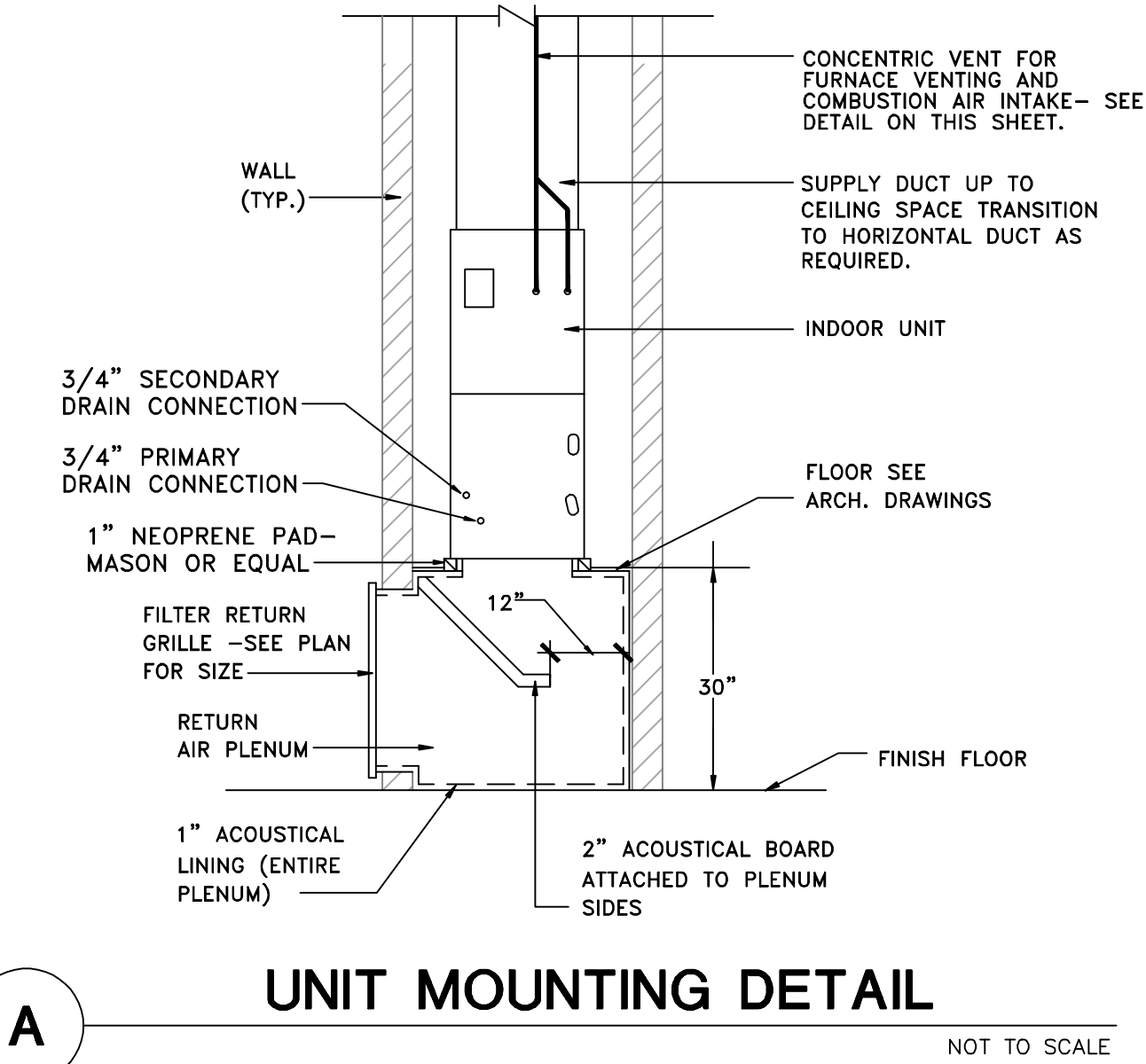
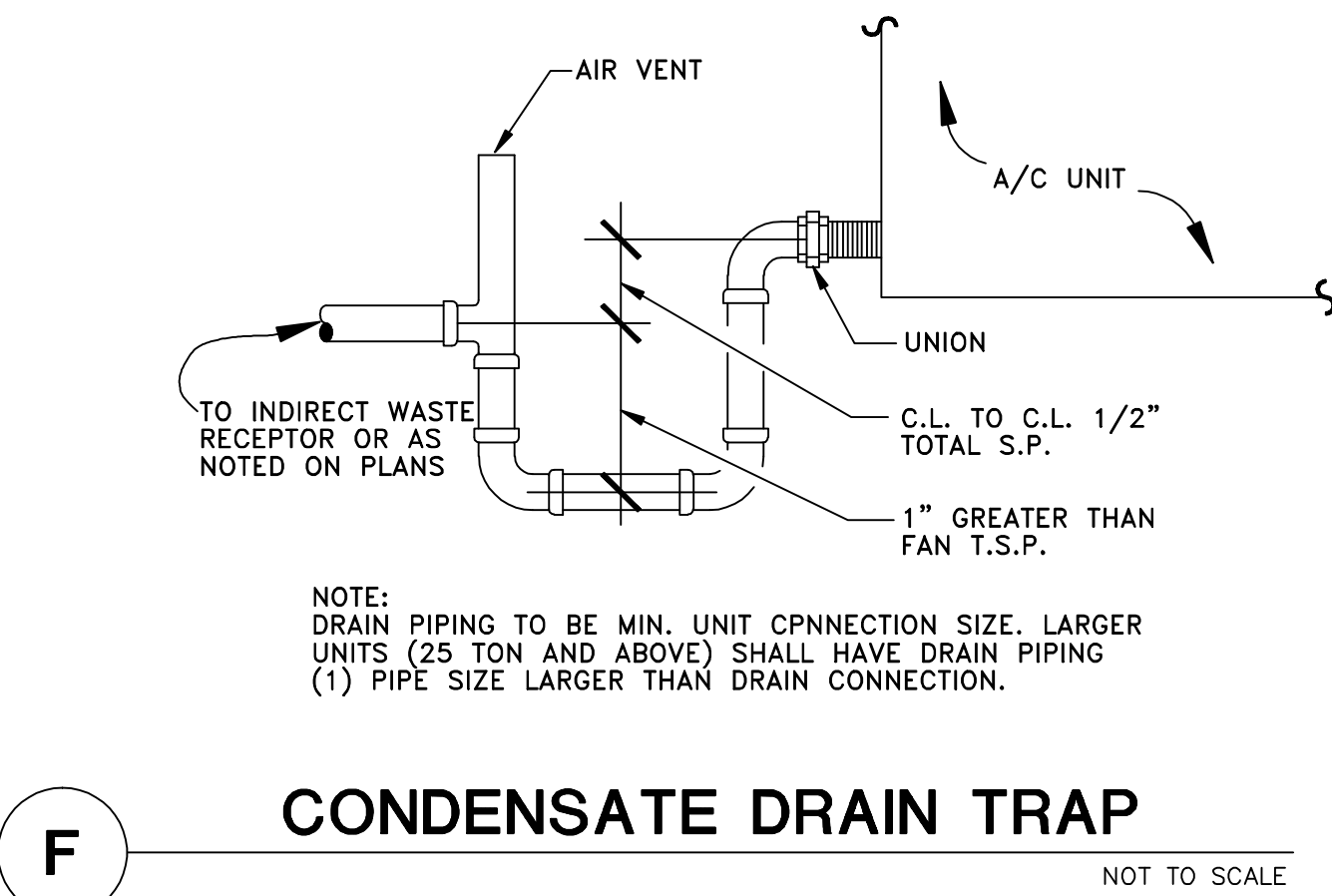
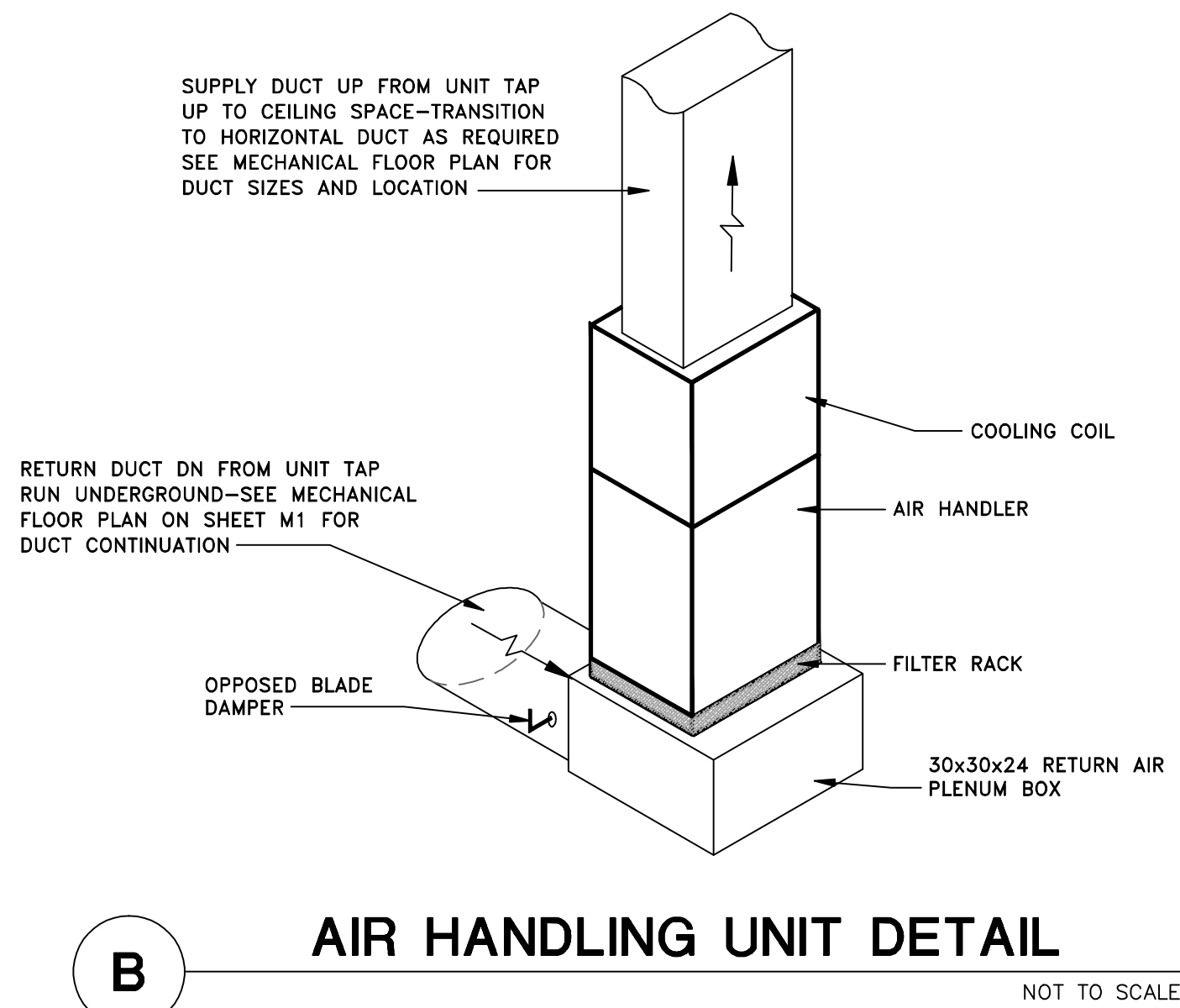
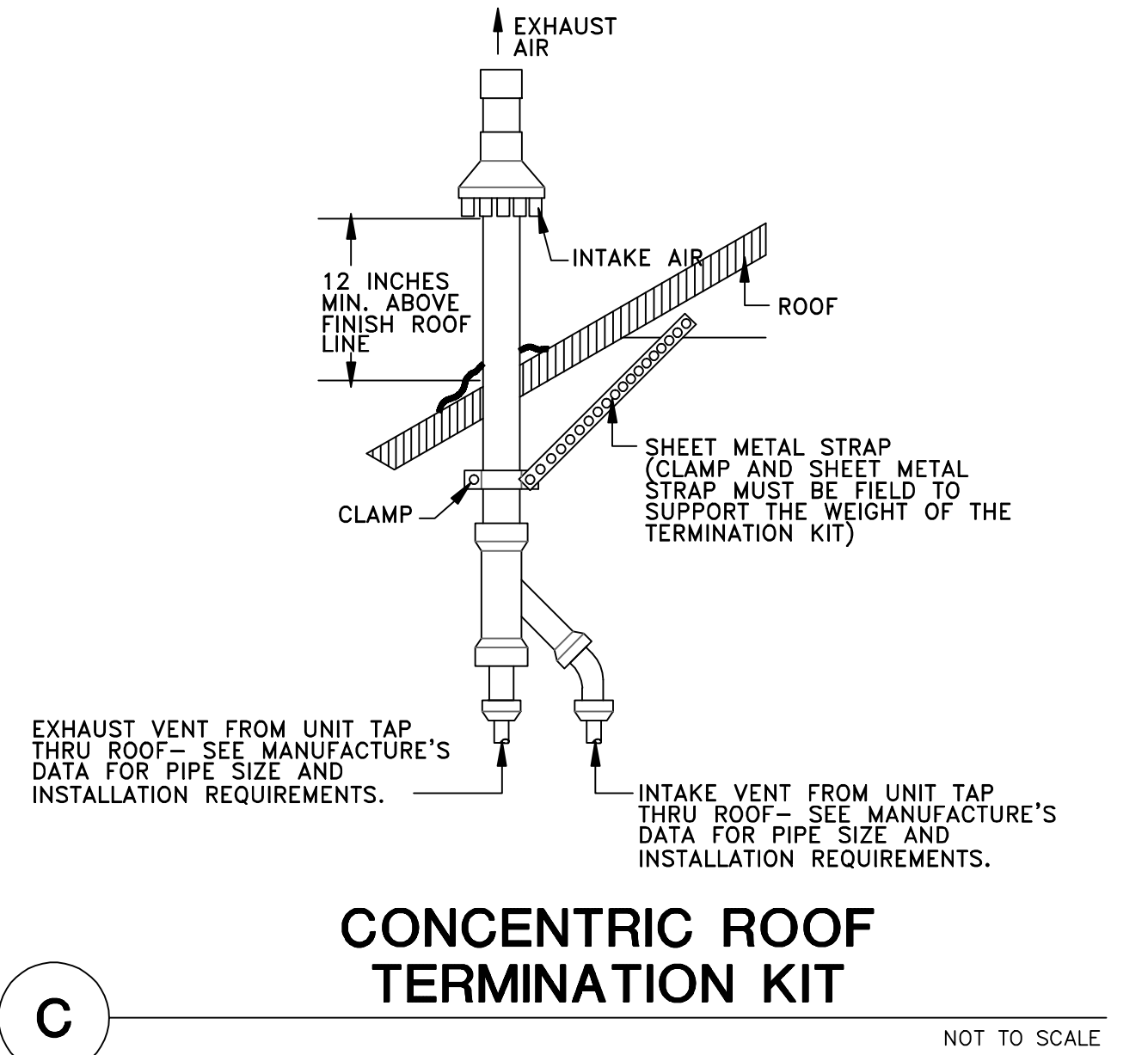
JOB

DATE

MECHANICAL DETAILS



**B.C. Engineering, Inc.**  
mechanical consulting engineers  
3001 W. Indian School Rd., Ste. 24  
Phoenix, Arizona 85017  
(602) 279-9532 FAX: (602) 279-9197  
BCE # 270159



NOTE:  
PROVIDE COMBUSTION AIR KIT, CONSISTING OF A SLIDING STAINLESS STEEL ACCESS DOOR AFFIXED TO A FOUR INCH (4\") DIAMETER STEEL SLEEVE APPROXIMATELY TWELVE INCHES (12\") LONG. AN EXTERIOR VENT WITH DRESS PLATE, WEATHER HOOD AND RODENT PREVENTION SCREEN OF A MAXIMUM ONE-QUARTER INCH (1/4\") WIRE MESH.

THE ACCESS DOOR IS FITTED INTO THE FINISH FIRE BRICK LINING AT INTERIOR SIDEWALL OF THE FIRE-LETE FIRE BOX. THE TWELVE INCH (12\") LONG SLEEVE CAN BE INTRODUCED INTO THE FIREBOX SIDE WALL APPROXIMATELY HALFWAY BACK IN THE FIREBOX BY CORE DRILLING AN APPROXIMATELY 9/16\"/>