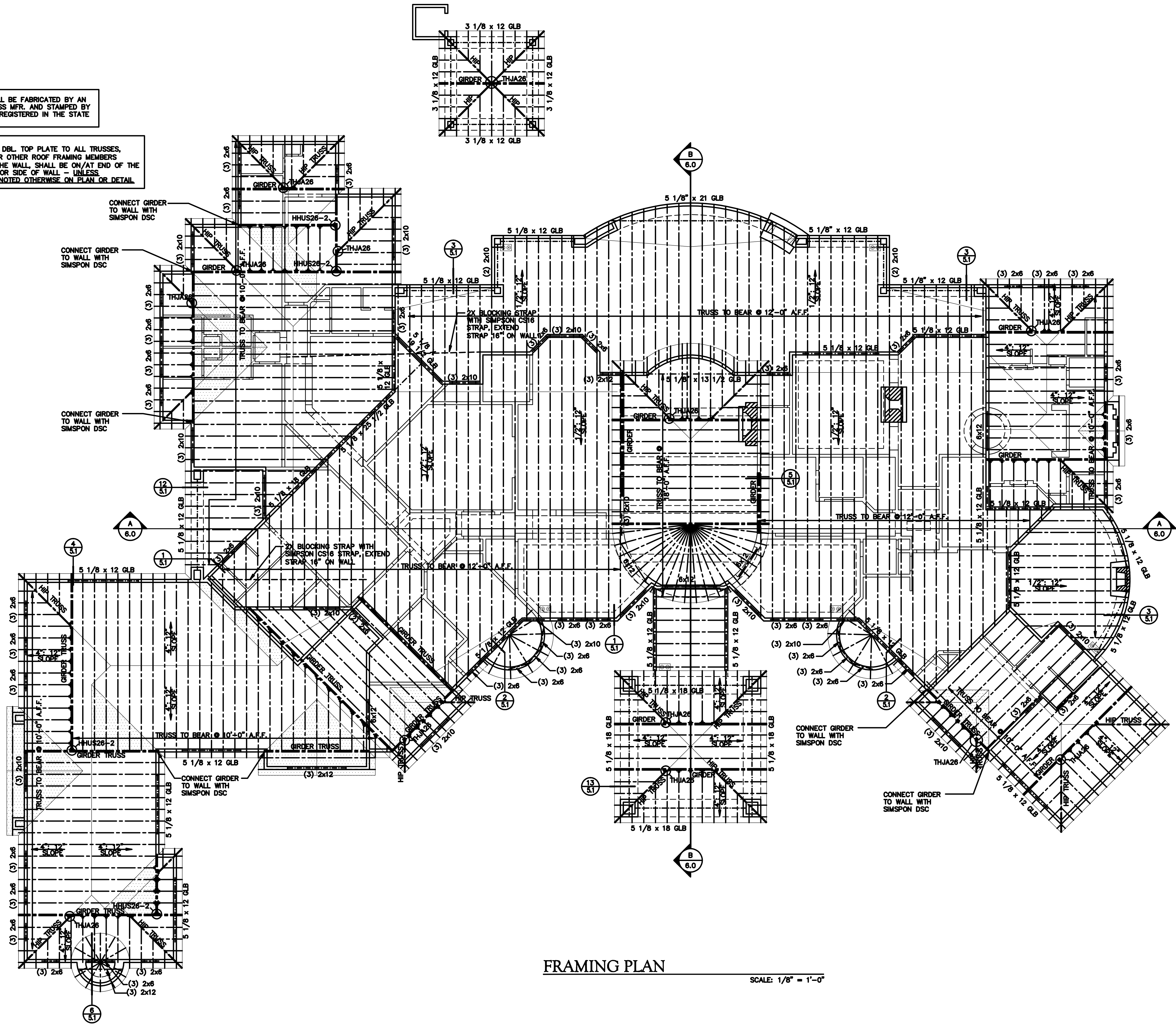


TRUSSES SHALL BE FABRICATED BY AN APPROVE TRUSS MFR. AND STAMPED BY AN ENGINEER REGISTERED IN THE STATE OF ARIZONA

FRAMING TIES:  
SIMPSON H2.5 DBL. TOP PLATE TO ALL TRUSSES, RAFTERS &/OR OTHER ROOF FRAMING MEMBERS BEARING ON THE WALL, SHALL BE ON/AT END OF THE TRUSS, EXTERIOR SIDE OF WALL - UNLESS SPECIFICALLY NOTED OTHERWISE ON PLAN OR DETAIL.



FRAMING PLAN

SCALE: 1/8" = 1'-0"



ARIZONA FIRST PARTNERS 3 LLC.