

FINAL PLAT
21ST & THOMAS MEDICAL AND PROFESSIONAL PLAZA
PHOENIX, ARIZONA



REVISIONS:

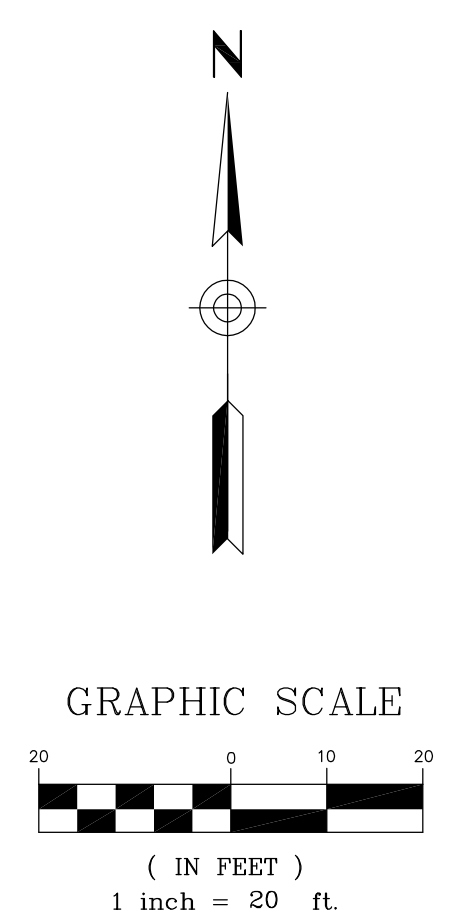
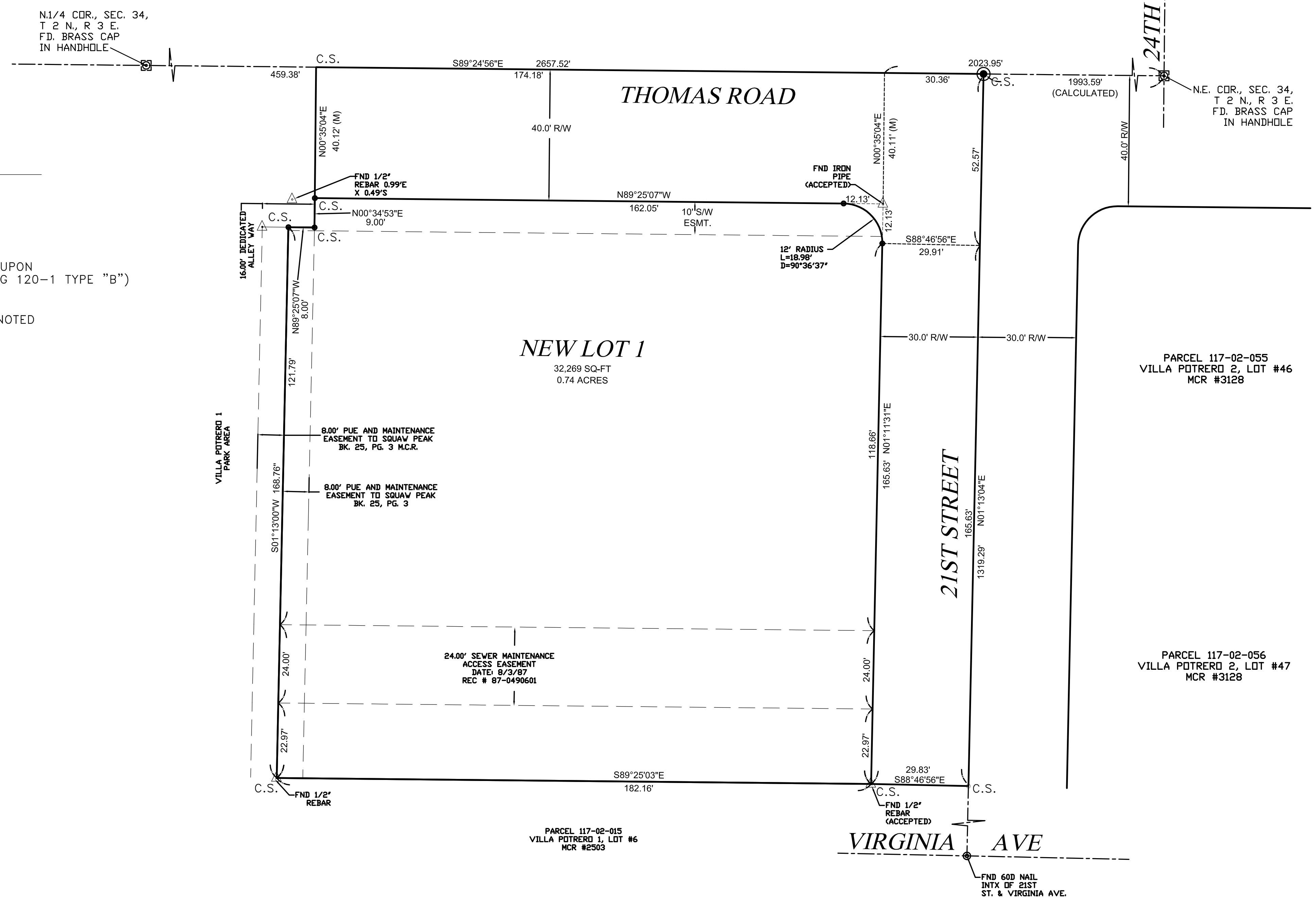
DESIGN BY:BBT
DRAWN BY:BBT
SCALE:1"=20'
DATE:MAY 2007

JOB No.:
0556

C2 of 2

LEGEND

- 1/2" REBAR TO BE SET W/ LS CAP #34559
- └ R/W RIGHT-OF-WAY
- └ C.S. CORNER OF THIS SUBDIVISION
- BRASS CAP FLUSH TO BE SET UPON FINAL PLAT APPROVAL (PER MAG 120-1 TYPE "B")
- ⊠ BRASS CAP IN HAND HOLE
- △ FOUND PROPERTY CORNER AS NOTED
- PUE PUBLIC UTILITY EASEMENT
- S/W SIDEWALK



N1/4 COR., SEC. 34,
T 2 N., R 3 E.
F.D. BRASS CAP
IN HANDHOLE

NE. COR., SEC. 34,
T 2 N., R 3 E.
F.D. BRASS CAP
IN HANDHOLE

PARCEL 117-02-015
VILLA POTRERO 1, LDT #6
MCR #2503

PARCEL 117-02-055
VILLA POTRERO 2, LDT #46
MCR #3128

PARCEL 117-02-056
VILLA POTRERO 2, LDT #47
MCR #3128