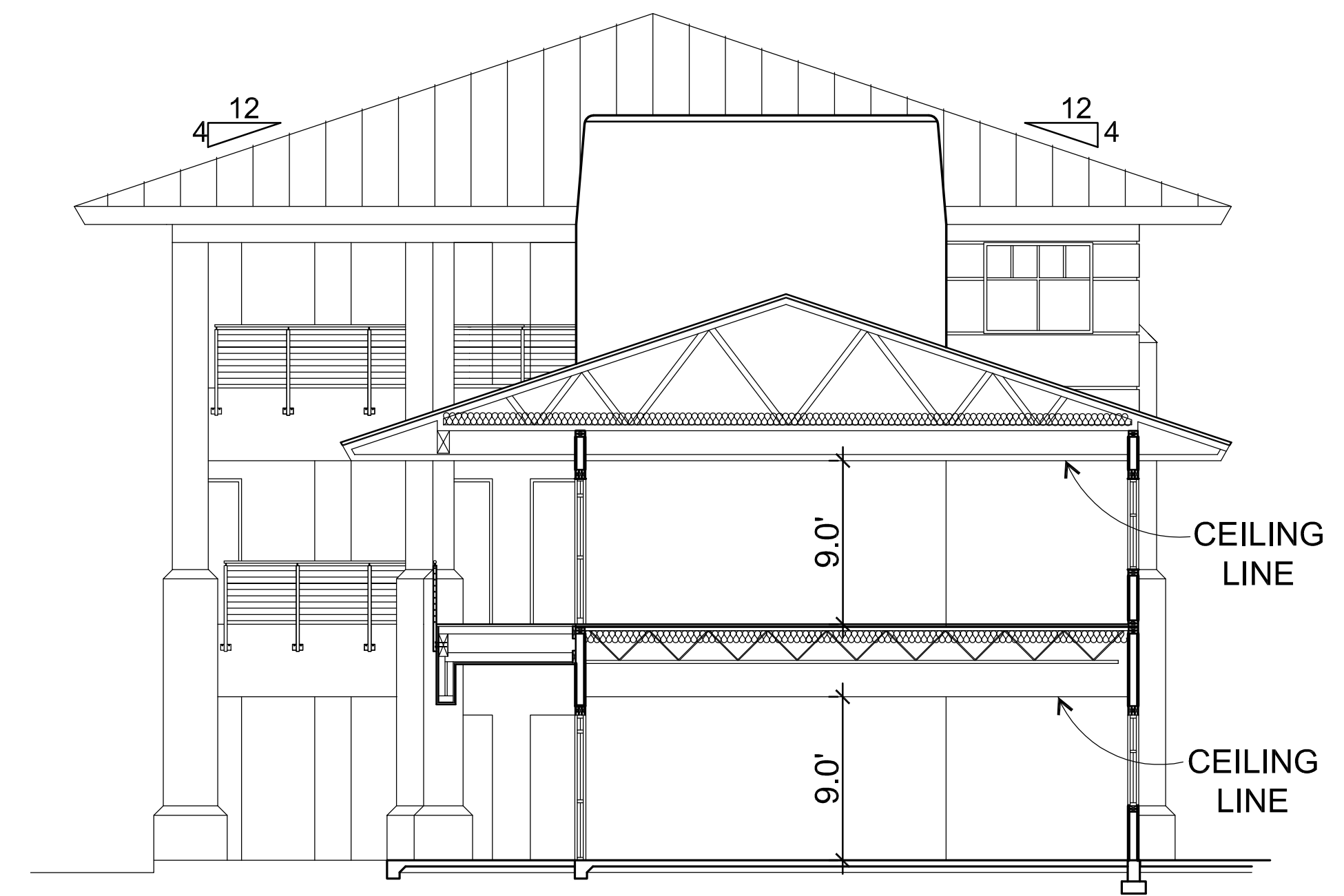
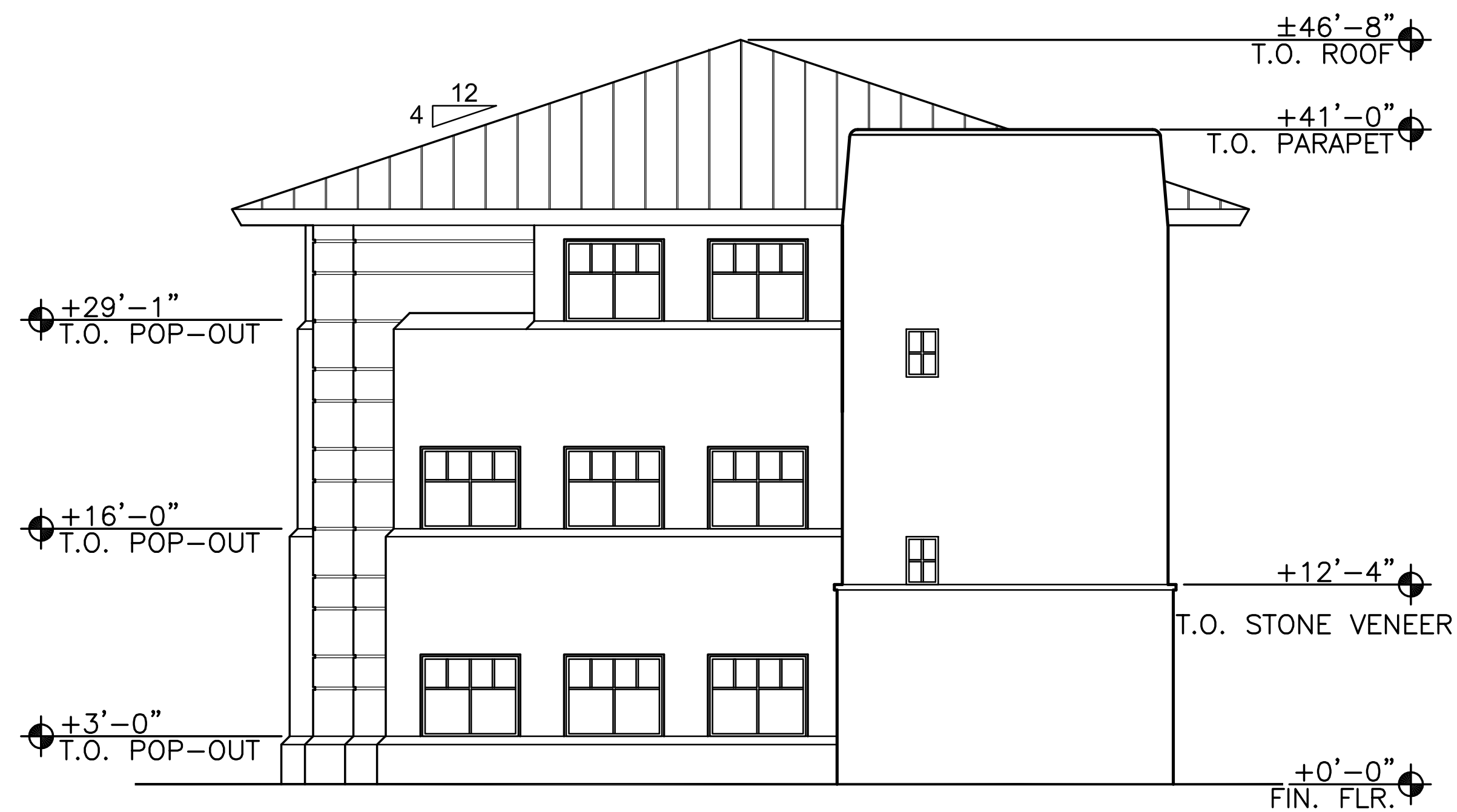


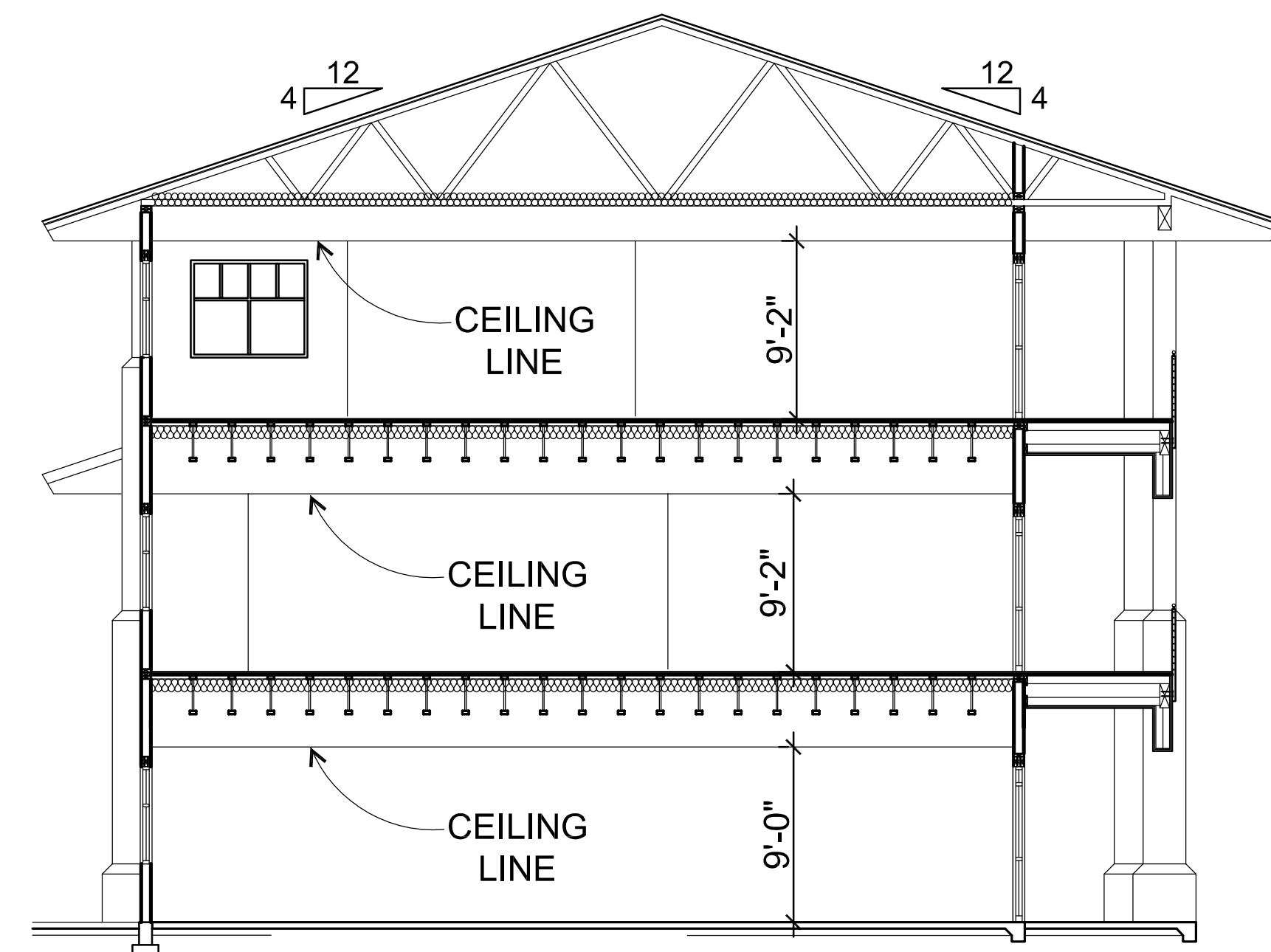
EAST END SECTION,
UNITS 101 & 201
(N.T.S.)



EAST SIDE SECTION,
UNITS 101, 102, 201, & 202
(N.T.S.)



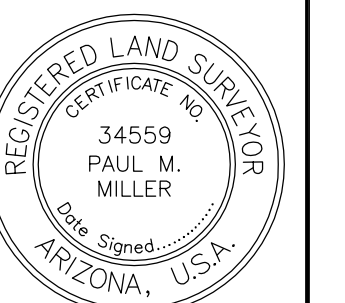
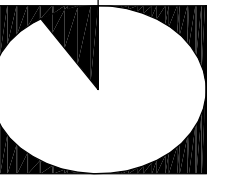
WEST END SECTION,
UNITS 104, 204, & 301
(N.T.S.)



WEST SIDE SECTION,
UNITS 103, 104, 203, 204, 301, & 302
(N.T.S.)

LEGEND

- 1/2" REBAR TO BE SET W/ LS CAP #34559
- R/W RIGHT-OF-WAY
- C.S. CORNER OF THIS SUBDIVISION
- BRASS CAP FLUSH TO BE SET UPON FINAL PLAT APPROVAL (PER MAG 120-1 TYPE "B")
- └─┘ BRASS CAP IN HAND HOLE
- △ FOUND PROPERTY CORNER AS NOTED
- PUE PUBLIC UTILITY EASEMENT
- P1 INDICATES UNCOVERED PARKING SPACE & NUMBER
- PC1 INDICATES COVERED PARKING SPACE & NUMBER
- PH1 INDICATES HANDICAP PARKING SPACE & NUMBER
- PCH1 INDICATES COVERED HANDICAP PARKING SPACE & NUMBER
- C.E. INDICATES COMMON ELEMENT



REVISIONS:

DESIGN BY:BBT
DRAWN BY:BBT
SCALE: N/A
DATE:AUG 2007

JOB No.:
0556