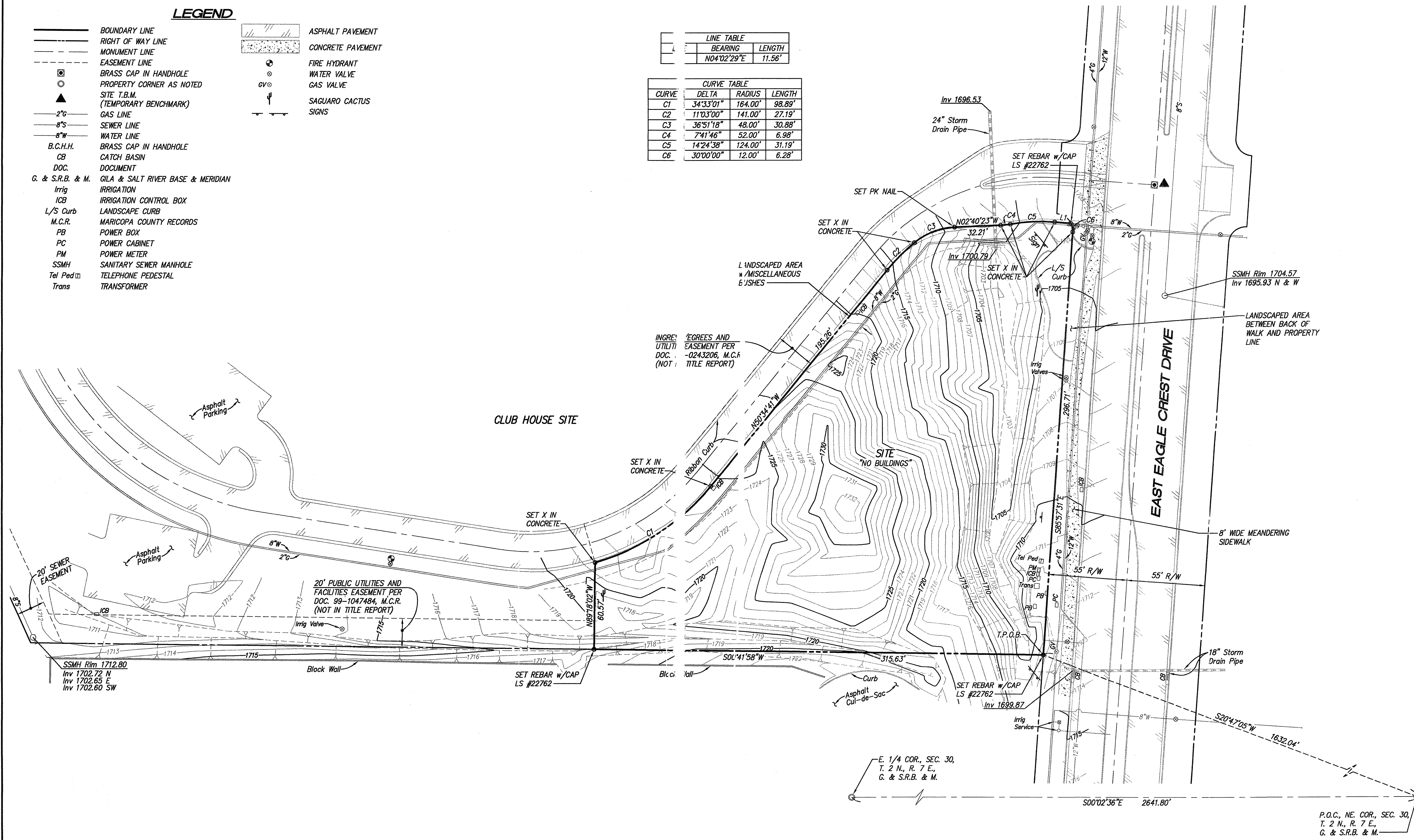


LEGEND

- BOUNDARY LINE
- - - RIGHT OF WAY LINE
- - - MONUMENT LINE
- - - EASEMENT LINE
- ⊙ BRASS CAP IN HANDHOLE
- PROPERTY CORNER AS NOTED
- ▲ SITE T.B.M. (TEMPORARY BENCHMARK)
- 2" GAS LINE
- 8" SEWER LINE
- 8" WATER LINE
- B.C.H.H. BRASS CAP IN HANDHOLE
- CB CATCH BASIN
- DOC. DOCUMENT
- G. & S.R.B. & M. GILA & SALT RIVER BASE & MERIDIAN
- Irrig IRRIGATION
- ICB IRRIGATION CONTROL BOX
- L/S Curb LANDSCAPE CURB
- M.C.R. MARICOPA COUNTY RECORDS
- PB POWER BOX
- PC POWER CABINET
- PM POWER METER
- SSMH SANITARY SEWER MANHOLE
- Tel Ped TELEPHONE PEDESTAL
- Trans TRANSFORMER
- ASPHALT PAVEMENT
- CONCRETE PAVEMENT
- FIRE HYDRANT
- WATER VALVE
- GAS VALVE
- SAGUARO CACTUS
- SIGNS

LINE TABLE			
LINE	BEARING	LENGTH	
L	N04°02'29"E	11.56'	

CURVE TABLE			
CURVE	DELTA	RADIUS	LENGTH
C1	34°33'01"	164.00'	98.89'
C2	11°03'00"	141.00'	27.19'
C3	36°51'18"	48.00'	30.88'
C4	7°41'46"	52.00'	6.98'
C5	14°24'38"	124.00'	31.19'
C6	30°00'00"	12.00'	6.28'



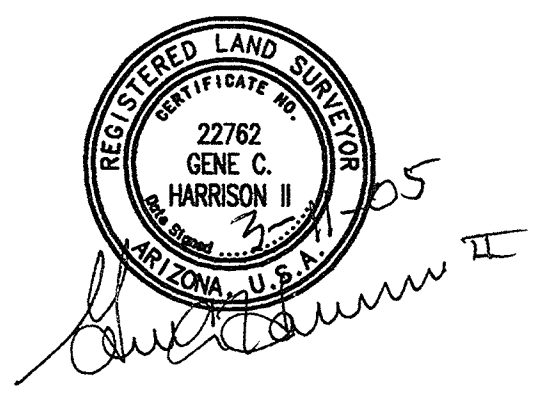
GeoDimensions
 3030 E Camelback Road Suite 260
 Phoenix, Arizona 85016
 Phone (602) 952-8788
 Fax 952-9905

• Planning
 • Civil Engineering
 • Land Surveying
 • Water Resources
 • Construction Services

BOUNDARY and TOPOGRAPHIC SURVEY OF THE NORTHEAST CORNER OF LAS SENDAS PARCEL 7

SHEET 2 OF 2

PROJ. NO. 05919 DWN JLC CKD GCH DATE 03/2005



I:\57567300_035618\dwg_035618a01.dwg, 03/14/2005 10:10:54 AM